

Roman Steps and Libar Valley Circular

Walking - Moderate



This circular walk takes us from the village of Benaojan, climbing up into the mountains behind the village and to the surprisingly well preserved remains of some Roman steps, cut into the mountainside to ease the journey over the mountain pass to the Libar valley. From here we climb over the top of the pass and cut back through the valley, with rocky crags towering on each side, then crossing a wide fertile karst plain and down a mountain track to the village of Montejaque. After refreshments on the village square and an optional visit to the mirador "viewpoint" above the village, we head down the "raspa" a steep shortcut path between the villages of Montejaque and Benaojan.

Distance: 16km
Time: 4-5 hours
Ascent: 600 metres
Descent: 600 metres
Max Alt: 1032 metres
Start: Benaojan
Finish: Benaojan

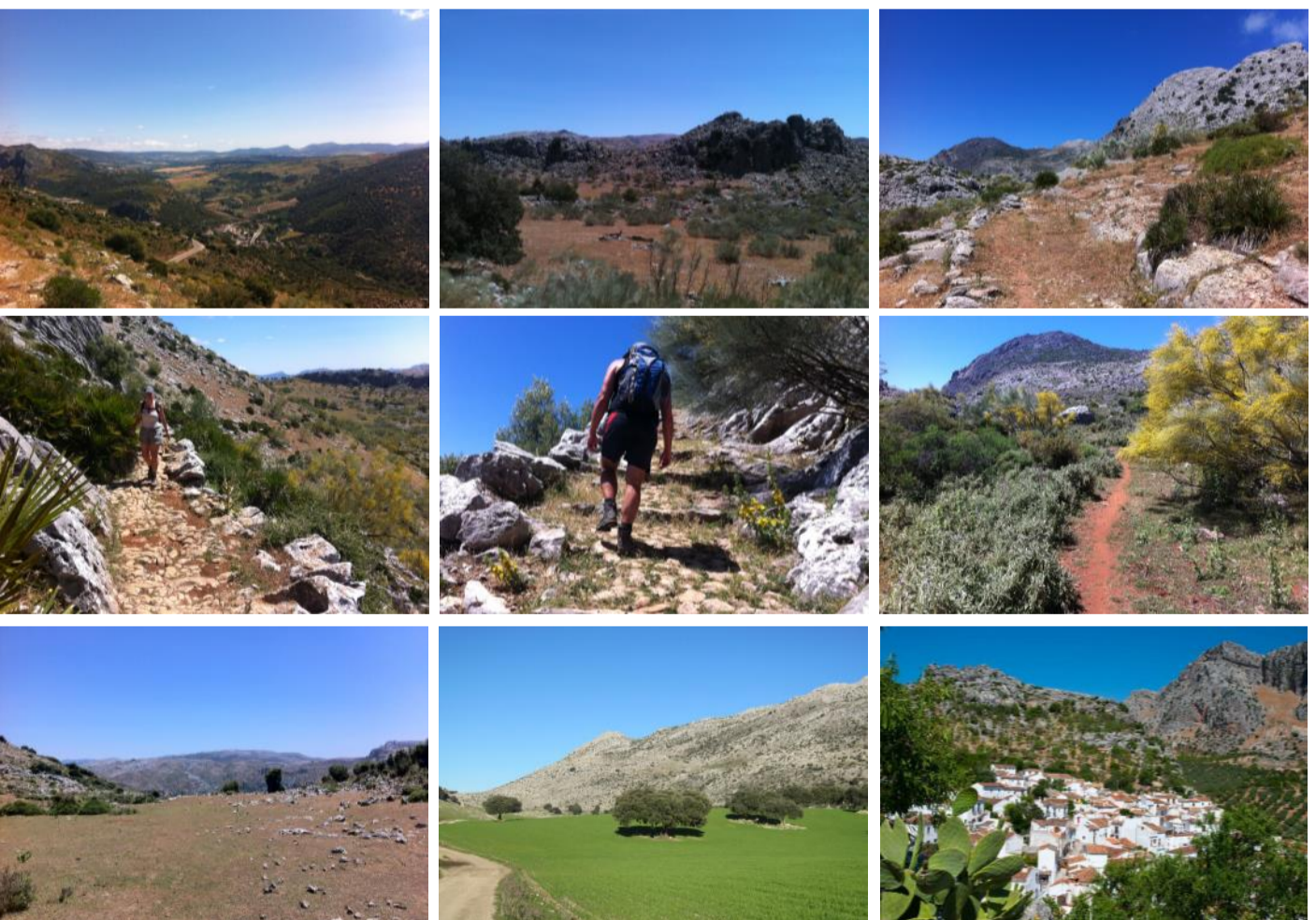
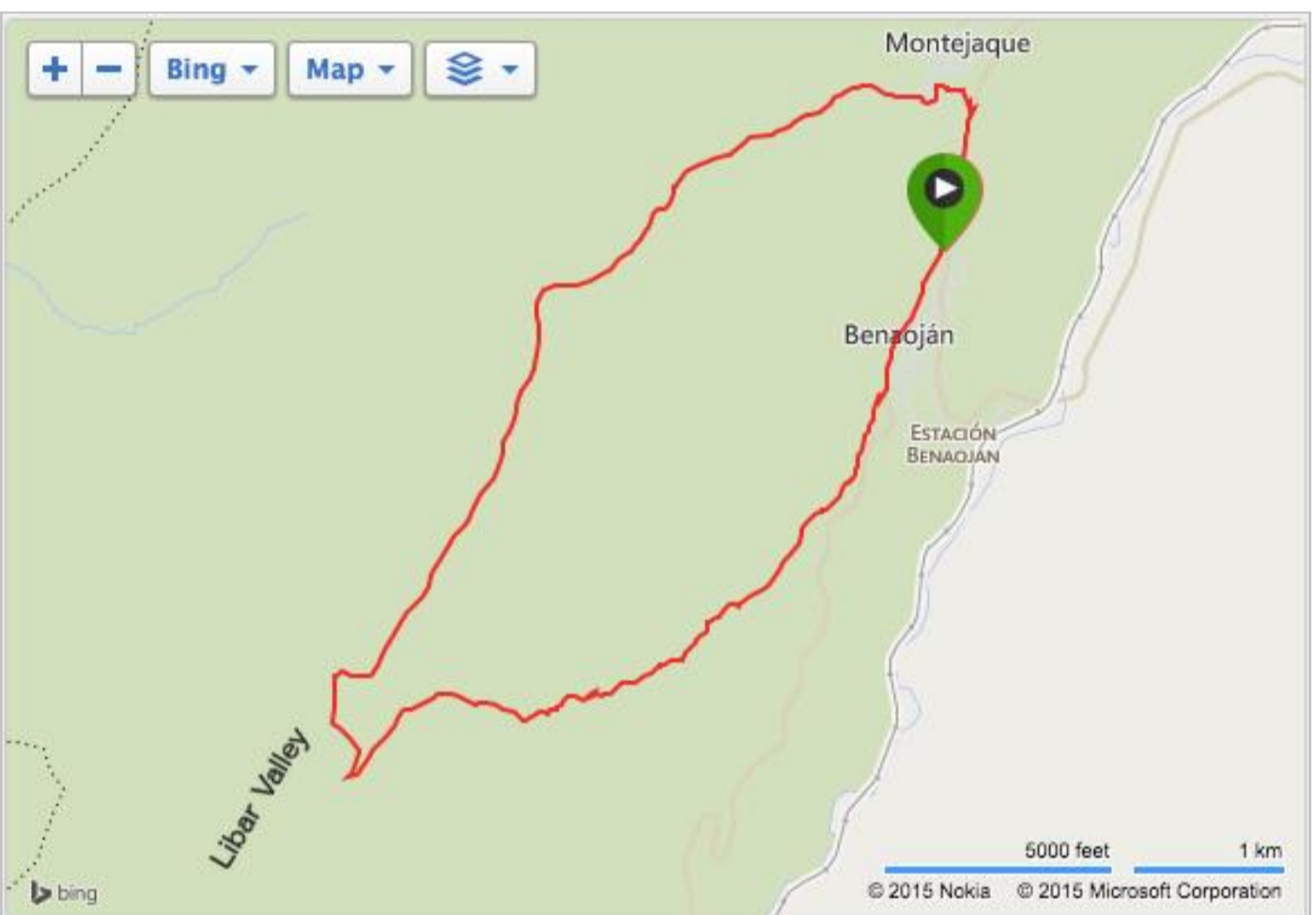
Included in our prices:

- Transport from and back to Ronda
- English speaking guide

[CONTACT US](#)

€55 p.p.*

* price is based on a minimum of 2 people.



Tel: 0034 638 873 279 [email: info@hikeandbikeholidays.com](mailto:info@hikeandbikeholidays.com)

Hike + Bike The Sierras, 5 Plaza Prado Viejo, 29400 Ronda

Activ Turismo No. AT/MA/00221