

# Torrecilla West to East

Walking - Challenging



This walk gives you a unique opportunity to cross the full width of the Sierra de las Nieves Natural Park, a protected area of natural beauty, filled with rocky mountain peaks, harsh limestone plains, ancient pine forest and holm oak woods with no roads, little habitation and a real "away from it all" feel. We walk through varied terrain, rocky in places, using forest tracks and narrow paths, before taking on a short but steep climb up to the peak of Torrecilla, the highest peak in western Andalucia at 1,919 metres above sea level. From here you can take in spectacular views, south to the Mediterranean, west to the Rock of Gibraltar, east to the Sierra Nevada in Granada, and north to the Serrania de Ronda. It feels like you are on top of the world and is an experience not to be missed. We descend through varying landscapes with rocky mountain vistas to the Mirador Saucillo which overlooks the village of Yunquera.

**Distance:** 18km  
**Time:** 6-7 hours  
**Ascent:** 1660 metres  
**Descent:** 1188 metres  
**Max Alt:** 1919 metres  
**Start:** Sierra de las Nieves  
**Finish:** Sierra de las Nieves

### Included in our prices:

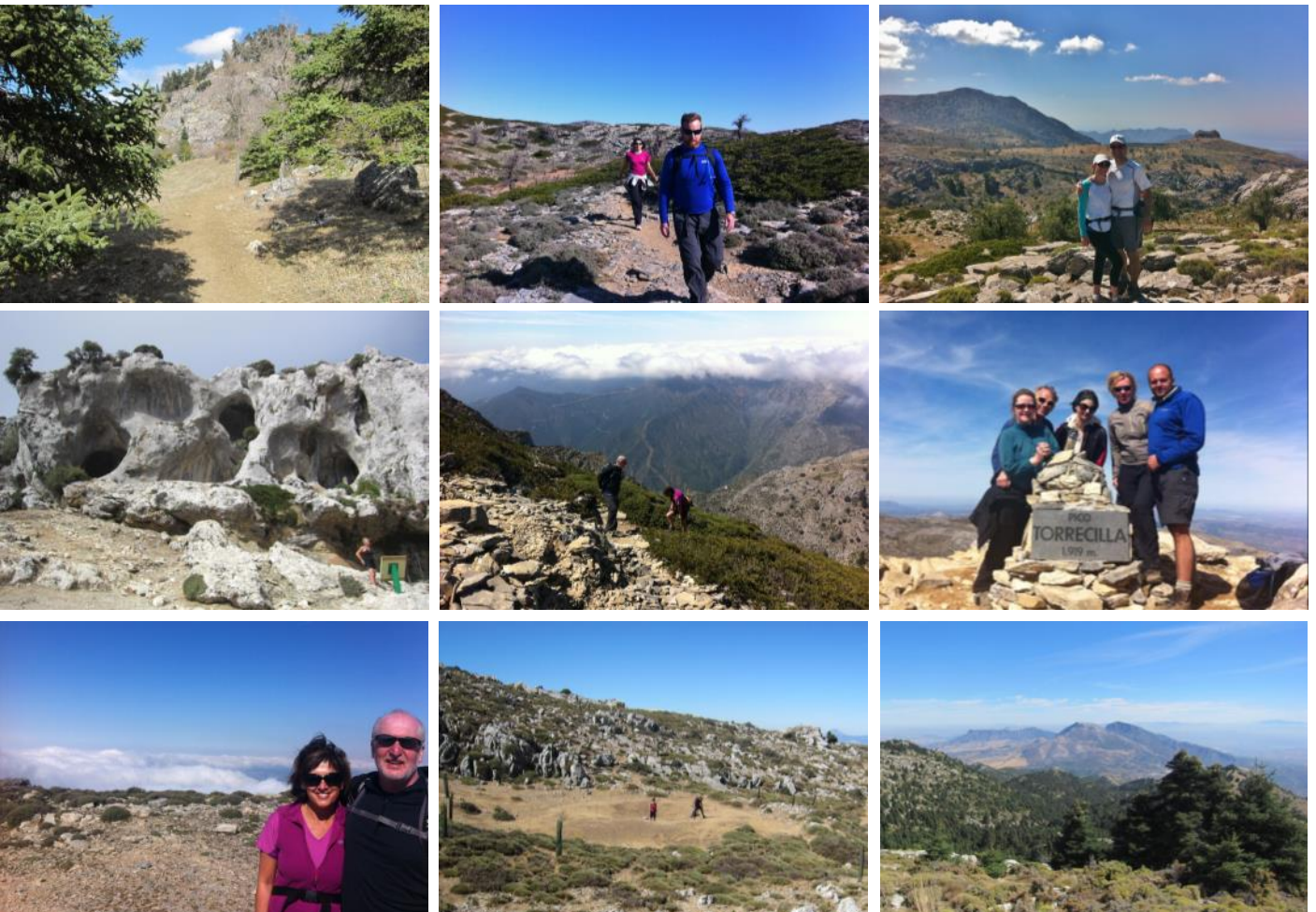
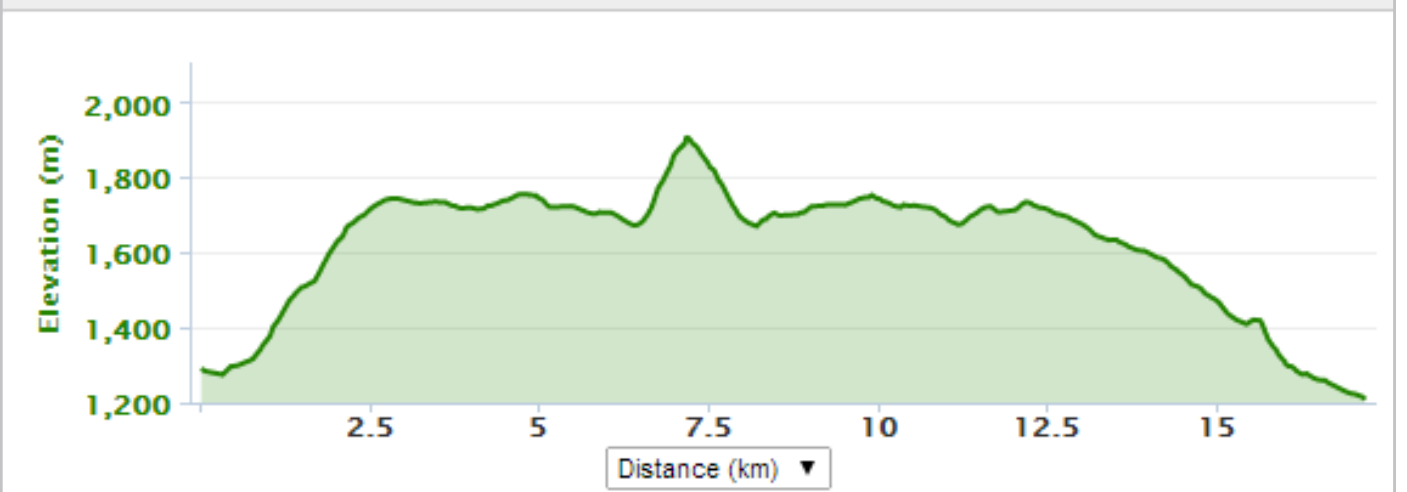
- Transport from and back to ronda
- English speaking guide

[CONTACT US](#)

**€65 p.p.\* / €75 p.p.\*\***

\* price for 3 people or more

\*\* price for 2 people



Tel: 0034 638 873 279 [email: info@hikeandbikeholidays.com](mailto:info@hikeandbikeholidays.com)

Hike + Bike The Sierras, 5 Plaza Prado Viejo, 29400 Ronda

Activ Turismo No. AT/MA/00221